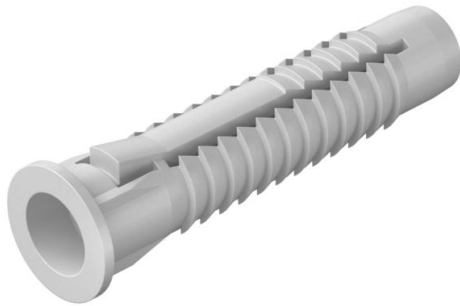


# Technical data sheet

## Universal anchor

Item number: 2347586



Also suitable as a cavity anchor, with collars to prevent slipping. 3 tabs take up the torque.  
Required minimum bolt length = anchor length + component thickness + 1 x bolt  $\varnothing$ .  
Withdrawal force applies to wood screws of the largest bolt diameter in concrete of class B25.  
Our safety value recommendation: 5x

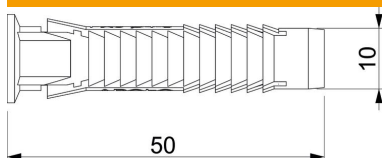


**PE** Polyethylene

### Master data

Item number	2347586
Type	910 FX10x50
Description 1	Universal anchor
Available from	01.05.2020
Manufacturer	OBO
Dimension	10x50
Colour	Light grey
Material	Polyethylene
Smallest sales unit	50
Unit of quantity	Piece
Weight	0.28 kg
Weight unit	kg/100 pc.

### Dimensions



Length	50 mm
Dimension D	10 mm
Dimension L	50 mm

# Technical data sheet

## Universal anchor

Item number: 2347586



### Technical data

Version for	Universal anchor
Pull-out value	1280 N
Concrete Frat	1280
Drill hole diameter, min.	10 mm
Suitable for fastening with cable ties	no
Suitable for gas concrete	no
Suitable for hexagonal wood screw	yes
Hollow brick Hlz12 Frat	450
Wood screws	6-8
Porous calcareous sandstone KSL12 Fempf.	670
Solid calcareous sandstone KSL12 Frat	900
With edge	yes
With bolts	no
Porous concrete P2 Fempf.	160
Porous concrete P4 Fempf.	300
Full brick Mz12 Frat	900