

Technical data sheet

Gas concrete anchor 8

Item number: 2347261



The anchor can be knocked directly into the porous concrete (gas concrete resistance class G2). With a resistance class of G4 or greater, a 5 or 6 mm hole should be pre-drilled.

Screw length: Component thickness + 40 mm (6 mm) / 55 mm (8 mm).



PA Polyamide

Master data

Item number	2347261
Type	910 GD 8x50
Description 1	Gas concrete anchor
Manufacturer	OBO
Dimension	8x50mm
Colour	Light grey
Material	Polyamide
Smallest sales unit	50
Unit of quantity	Piece
Weight	0.263 kg
Weight unit	kg/100 pc.

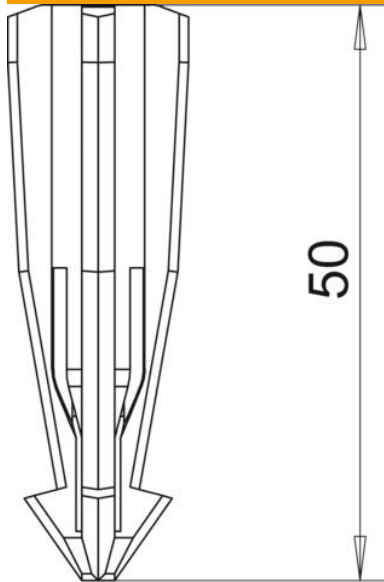
Technical data sheet

Gas concrete anchor 8

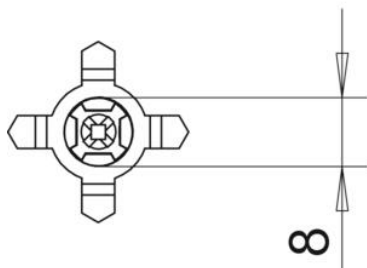
Item number: 2347261



Dimensions



Length	50 mm
Dimension D	8 mm
Dimension L	50 mm



Technical data

Drill hole depth	58 mm
Drill hole diameter, min.	8 mm
Suitable for fastening with cable ties	no
Suitable for gas concrete	yes
Suitable for screw diameter, max.	6 mm
Suitable for screw diameter, min.	4.5 mm
Suitable for hexagonal wood screw	yes
Halogen-free	yes
With edge	no
With bolts	no