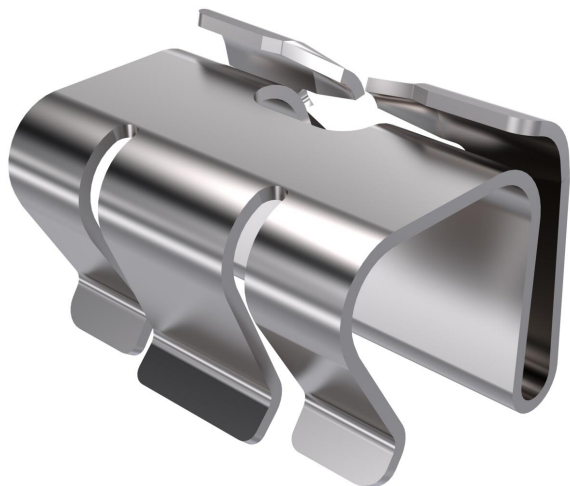


Technical data sheet

Cover clamp A2

Item number: 6052810



Cover clamp for secure fastening of covers on cable trays and cable ladders.
At least 6 cover clamps should be mounted for each 3 metres of cover.



A2 Stainless steel

2B Bright, treated

Master data

Item number	6052810
Type	DK DRLU A2
Description 1	Cover clamp
Description 2	for cover, unperforated
Manufacturer	OBO
Dimension	19x25x19
Material	Stainless steel
Surface	Bright, treated
Surface standard	
Smallest sales unit	30
Unit of quantity	Piece
Weight	0.842 kg
Weight unit	kg/100 pc.

Dimensions

Length	25 mm
Width	18 mm
Height	18 mm
Dimension B	18 mm

Technical data

Suitable for mesh cable tray	no
Suitable for cable ladder	yes
Suitable for cable tray	yes
Rustproof steel, pickled	no