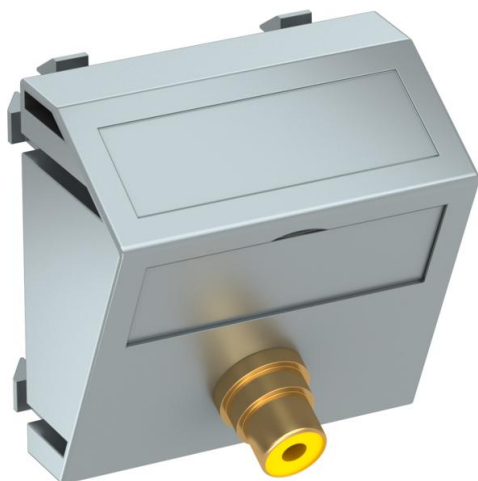


Technical data sheet

Video cinch connection, 1 module, slanting outlet, as 1:1 coupling, aluminium-painted
Item number: 6105012



Multimedia support with one cinch connection socket for composite video, slanting cable outlet, with labelling panel, cinch coupling (RCA), socket-socket version, colour coding yellow. Support plate with locking fastening, suitable for horizontal and vertical installation in the system environment.

PC Polycarbonate

Master data

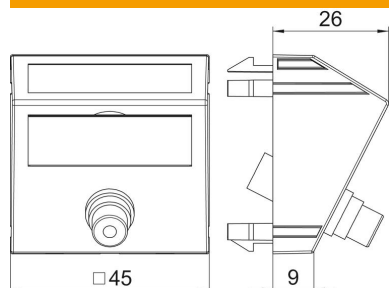
Item number	6105012
Type	MTS-R F AL1
Description 1	Multimedia support video cinch
Description 2	1x coupling, socket-socket
Manufacturer	OBO
Dimension	45x45mm
Colour	Aluminium painted
Material	Polycarbonate
Smallest sales unit	1
Unit of quantity	Piece
Weight	1.7 kg
Weight unit	kg/100 pc.

Technical data sheet

Video cinch connection, 1 module, slanting outlet, as 1:1 coupling, aluminium-painted
Item number: 6105012



Dimensions



Width	45 mm
Height	45 mm

Technical data

Number of units	1
Surface version	Matt
Fastening type	Lock
Halogen-free	yes
Hinged cover	no
Lamp-wire connector	no
With printed label	no
With dust protection	no
Protection rating	IP20
Depth	26 mm
Support ring	no
Transparent	no
Use	Cinch
Strain relief option	no
Combination	Basic element with central cover plate