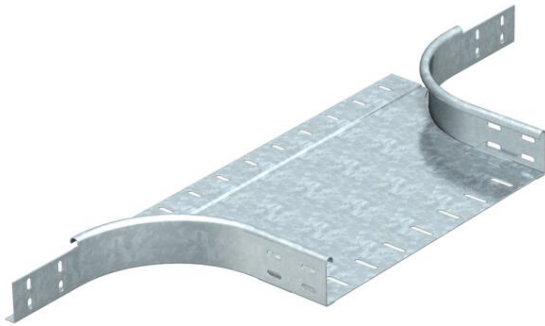


Technical data sheet

Add-on tee 60 FT

Item number: 7121504



Add-on tee for horizontal and vertical use. For all cable tray types of 60 mm side height.
Fastening materials should be ordered separately.



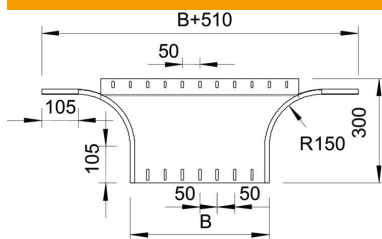
St Steel

FT Hot-dip galvanised

Master data

Item number	7121504
Type	RAA 650 FT
Description 1	Add-on tee
Description 2	round version
Manufacturer	OBO
Dimension	60x500
Material	Steel
Surface	Hot-dip galvanised
Surface standard	DIN EN ISO 1461
Smallest sales unit	1
Unit of quantity	Piece
Weight	280 kg
Weight unit	kg/100 pc.

Dimensions



Width	500 mm
Width	20 in
Height	60 mm
Height	2 in
Dimension B	500 mm
Dimension R	150 mm

Technical data sheet

Add-on tee 60 FT

Item number: 7121504



Technical data

Bend (angle)	90°
Connector version	Without connectors
Maintain electrical functions	no
Material thickness, floor plate	1.5 mm
NATO hole pattern	no
Change of direction	Horizontal
Rustproof steel, pickled	no
Wide-span version	no
Type of connector, cable support system	Screwed
Rail thickness	1.25 mm