

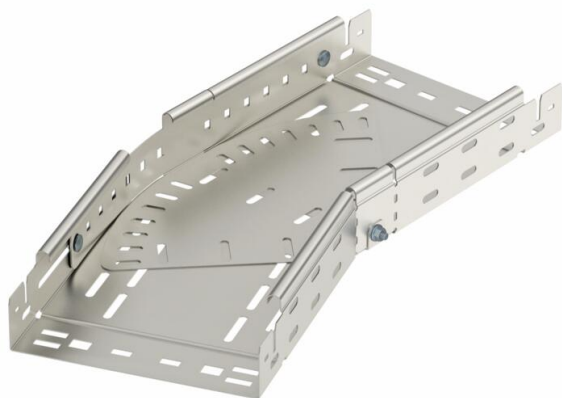
# Technical data sheet

## Magic bend, variable 60 A2

Item number: 6040524



Magic bend 0°–90°, variable, with quick connector system. For all cable tray types of 60 mm side height.



**A2** Stainless steel

**2B** Bright, treated

### Master data

Item number	6040524
Type	RBMV 620 A2
Description 1	Variable bend
Description 2	with quick connector
Manufacturer	OBO
Dimension	60x200
Material	Stainless steel
Surface	Bright, treated
Surface standard	
Smallest sales unit	1
Unit of quantity	Piece
Weight	163.6 kg
Weight unit	kg/100 pc.

### Dimensions

Width	200 mm
Height	60 mm
Plate thickness	1 mm
Dimension B	200 mm
Dimension L	490 mm

# Technical data sheet

Magic bend, variable 60 A2

Item number: 6040524



## Technical data

Bend (angle)	Adjustable
Connector version	Integrated connector
Maintain electrical functions	no
Mounting perforation in base	yes
NATO hole pattern	no
Change of direction	Horizontal
Rustproof steel, pickled	no
Side perforation	yes
Wide-span version	no
Type of connector, cable support system	Click fastening