

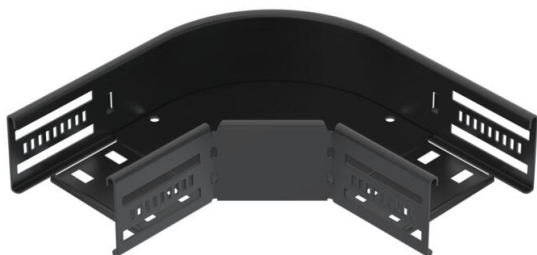
Technical data sheet

90° bend 60, black

Item number: 6043260



90° bend, horizontal, fitting for all cable tray types of 60 mm side height. Black coated.



St Steel

P135 PES135 - Polyester

Master data

| | |
|---------------------|----------------------------|
| Item number | 6043260 |
| Type | RB 90 610 FSK SW |
| Description 1 | 90° bend |
| Description 2 | for cable tray, horizontal |
| Manufacturer | OBO |
| Dimension | 60x100 |
| Colour | Jet black; RAL 9005 |
| Material | Steel |
| Surface | PES135 - Polyester |
| Surface standard | |
| Smallest sales unit | 1 |
| Unit of quantity | Piece |
| Weight | 54 kg |
| Weight unit | kg/100 pc. |

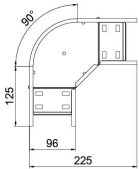
Technical data sheet

90° bend 60, black

Item number: 6043260



Dimensions



| | |
|-------------|--------|
| Width | 100 mm |
| Height | 60 mm |
| Dimension B | 100 mm |

Technical data

| | |
|---------------------------------|----------------------|
| Bend (angle) | 90° |
| Connector version | Integrated connector |
| Type | Bend, rigid |
| Material thickness, floor plate | 0.8 mm |
| With cover | no |
| Mounting perforation in base | no |
| Change of direction | Horizontal |
| Rustproof steel, pickled | no |
| Side perforation | no |
| Wide-span version | no |
| Recommended quantity of bolts | 10 St. |
| Rail thickness | 1.25 mm |