

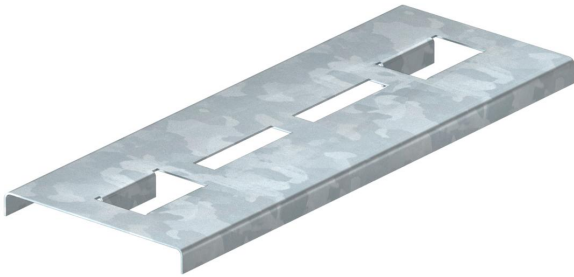
Technical data sheet

Rung support plate for the maintenance of electrical function FT

Item number: 6223036



Rung support plates to increase the support surface for the cables in the fittings for routing types with cable ladders for the maintenance of electrical function to DIN 4102 Part 12. Use the rung support plates to ensure the largest possible support surface in the cable ladder fittings for the function maintenance cables in case of fire. The rung support plates are just laid loosely on the rungs of the cable ladder fittings. The lugs pointing down prevent slippage. For cable ladder width 300 mm.



St Steel

FT Hot-dip galvanised

Master data

Item number	6223036
Type	SAB30 FT
Description 1	Rung support plate
Description 2	for function maintenance
Manufacturer	OBO
Dimension	280x140x16,5
Material	Steel
Surface	Hot-dip galvanised
Surface standard	DIN EN ISO 1461
Smallest sales unit	25
Unit of quantity	Piece
Weight	52 kg
Weight unit	kg/100 pc.

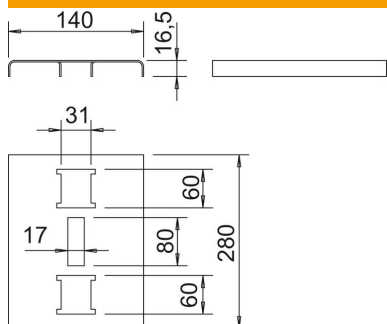
Technical data sheet

Rung support plate for the maintenance of electrical function FT

Item number: 6223036



Dimensions



Width	280 mm
Height	16.5 mm
Dimension a	60 mm
Dimension B	280 mm
Dimension b	80 mm

Technical data

Material thickness	1.5 mm
--------------------	--------