

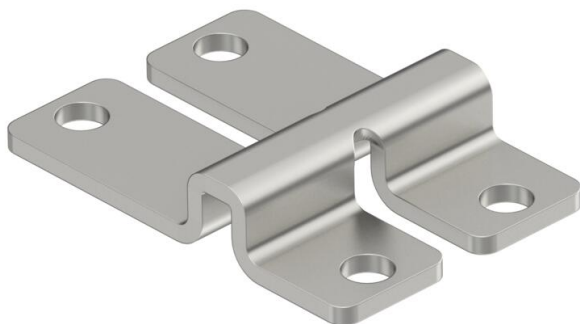
Technical data sheet

Wall clamp and central hanger A\$

Item number: 6017164



Fastening component for direct mounting of mesh cable trays to the wall and floor. Can be screwed or riveted on.



CE

A4 Stainless steel

2B Bright, treated

Master data

Item number	6017164
Type	WB GR A4
Description 1	Wall clamp and central hanger
Description 2	for cable tray to rivet/screw
Manufacturer	OBO
Dimension	47x32x9
Material	Stainless steel
Surface	Bright, treated
Surface standard	
Smallest sales unit	20
Unit of quantity	Piece
Weight	2.423 kg
Weight unit	kg/100 pc.

Technical data sheet

Wall clamp and central hanger A\$

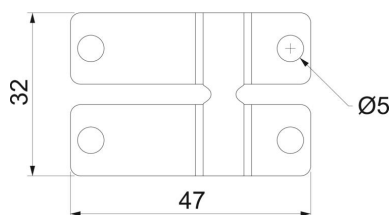
Item number: 6017164



Dimensions



Dimension | 47x32x9



Technical data

Version for	For wire thickness 6.0 mm
Maintain electrical functions	no
Suitable for mesh cable tray	yes
Suitable for cable ladder	no
Suitable for cable tray	no
Hole diameter	5 mm
With screw accessories	no
Rustproof steel, pickled	no