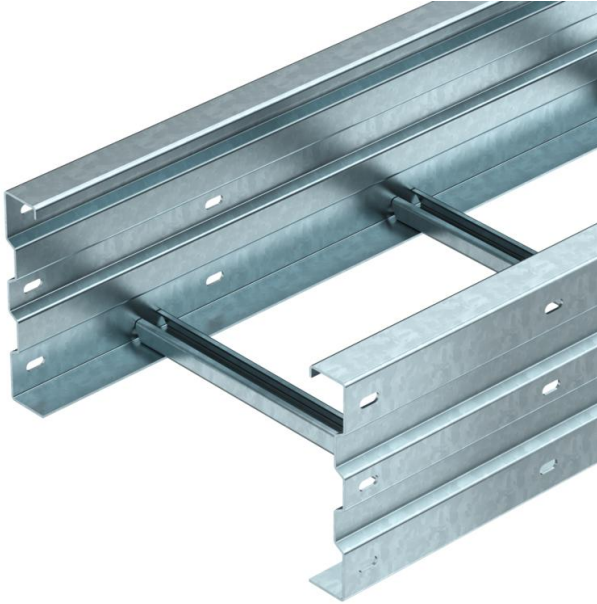


Technical data sheet

WKL 200 FT wide span cable ladder

Item number: 6232110



Wide span cable ladder with 200 mm side height.
Straight connectors of type WRVL 200 should be ordered separately and in the appropriate quantity.
Magnetic shield insulation without cover 10 dB, with cover 15 dB.



St

Steel

FT

Hot-dip galvanised

Master data

| | |
|---------------------|------------------------|
| Item number | 6232110 |
| Type | WKL 2060 FT |
| Description 1 | Wide span cable ladder |
| Manufacturer | OBO |
| Dimension | 200x600x6000 |
| Material | Steel |
| Surface | Hot-dip galvanised |
| Surface standard | DIN EN ISO 1461 |
| Smallest sales unit | 6 |
| Unit of quantity | Metre |
| Weight | 1480 kg |
| Weight unit | kg/100 m |

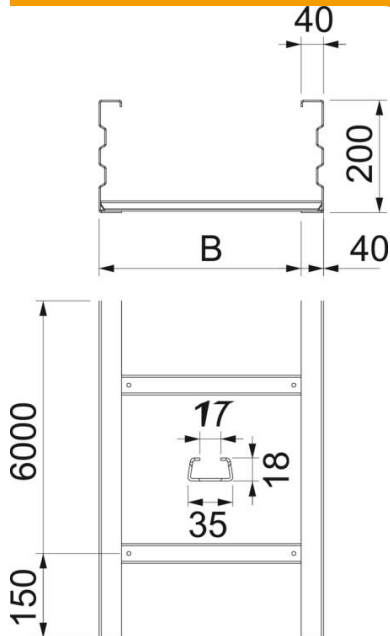
Technical data sheet

WKL 200 FT wide span cable ladder

Item number: 6232110



Dimensions



| | |
|---------------------|----------|
| Dimension | 200x600 |
| Length | 6,000 mm |
| Length | 6,000 ft |
| Width | 600 mm |
| Height | 200 mm |
| Dimension B | 600 mm |
| Dimension L | 6,000 mm |
| Rung slot dimension | 17.00 |

Technical data

| | |
|-------------------------------|------------------------|
| Version of the rungs | Profile unperforated |
| Maintain electrical functions | no |
| Usable cross-section | 1064 cm ² |
| Usable cross-section | 106400 mm ² |
| Rustproof steel, pickled | no |
| Side perforation | yes |
| Wide-span version | yes |
| Rail thickness | 2.5 mm |

Technical data sheet

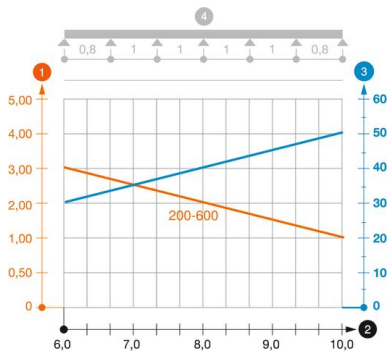
WKL 200 FT wide span cable ladder

Item number: 6232110



Loads

| | |
|-----------------------------------|----------|
| Insertable support spacings, min. | 6 m |
| Insertable support spacings, max. | 10 m |
| Support spacing 6.0 m | 3 kN/m |
| Support spacing 7.0 m | 2.5 kN/m |
| Support spacing 8.0 m | 2 kN/m |
| Support spacing 9.0 m | 1.4 kN/m |
| Support spacing 10.0 m | 1.4 kN/m |



Load diagram, wide span cable ladder, type WKL 200

- 1 Permitted cable tray/ladder load in kN/m without man load
- 2 Support width in m
- 3 Rail bend in mm at permitted kN/m
- 4 Load scheme during testing
- Load curve with cable tray/ladder width in mm
- Strut bend curve according to support width