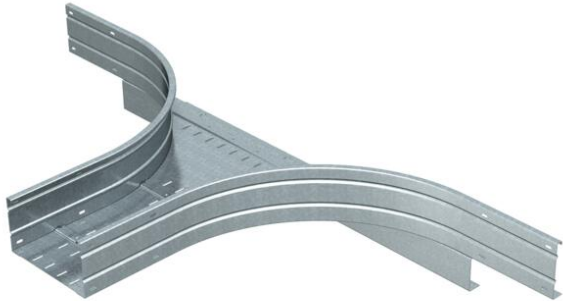


Technical data sheet

Add-on tee 160 FT

Item number: 6098843



Add-on tee for horizontal use. For all wide span cable trays of 160 mm side height.
For further stabilisation, additional supports should be planned for the area of the fittings.



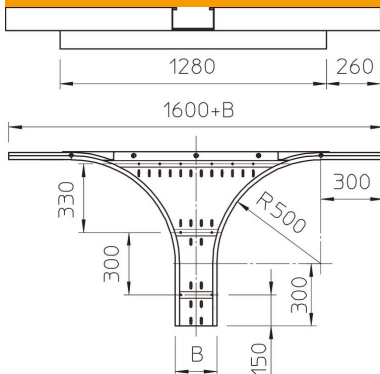
St Steel

FT Hot-dip galvanised

Master data

Item number	6098843
Type	WRAA 166 FT
Description 1	Add-on tee
Description 2	for wide span cable tray 160
Manufacturer	OBO
Dimension	160x600
Material	Steel
Surface	Hot-dip galvanised
Surface standard	DIN EN ISO 1461
Smallest sales unit	1
Unit of quantity	Piece
Weight	2460 kg
Weight unit	kg/100 pc.

Dimensions



Width	600 mm
Height	160 mm
Plate thickness	2 mm
Dimension B	600 mm
Dimension R	500 mm

Technical data sheet

Add-on tee 160 FT

Item number: 6098843



Technical data

Connector version	Without connectors
Material thickness, floor plate	1.5 mm
NATO hole pattern	no
Rustproof steel, pickled	no
Wide-span version	yes
Type of connector, cable support system	Screwed
Rail thickness	2 mm